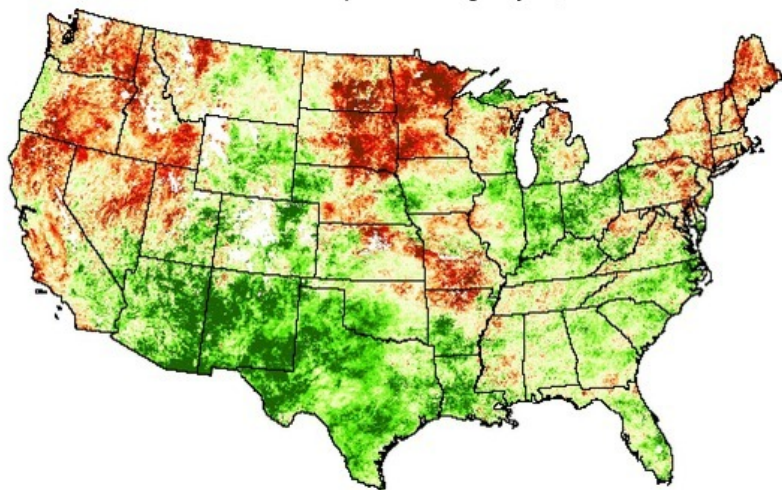
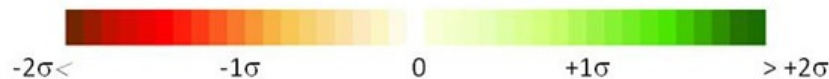


Evaporative Stress Index 4km

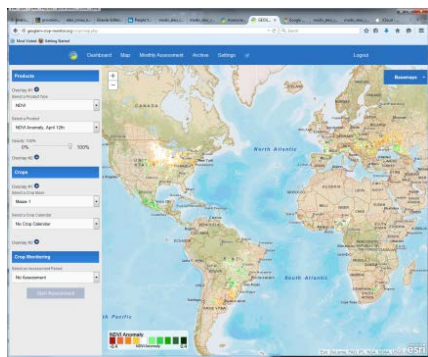
1 month composite ending May 17, 2015



Standardized ET/PET anomalies

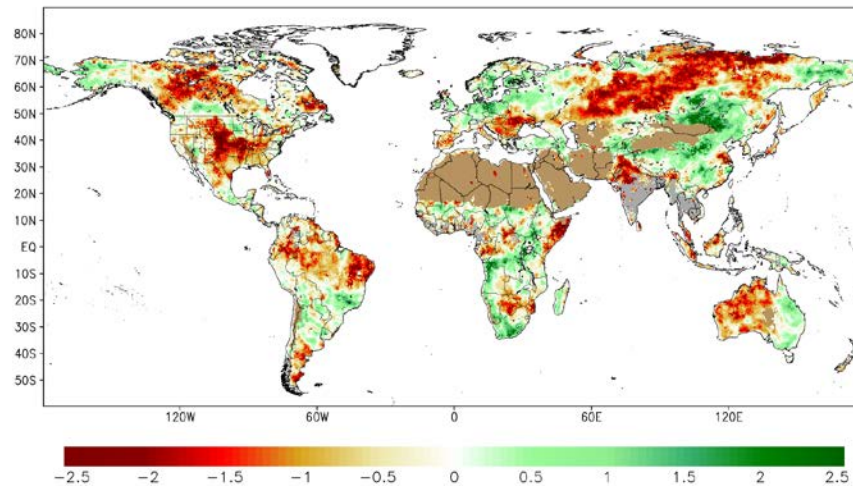


Global ESI data are being **incorporated into the GEOGLAM Global Crop Monitor Tool**, which provides monthly updates on global crop condition.



ESI provides **early warning of developing crop stress** and depleted soil moisture reserves, based on remotely sensed canopy/soil temperature.

In summer 2015, **NOAA will begin operational production** of daily ESI updates over CONUS in support of the U.S. Drought Monitor and NIDIS.

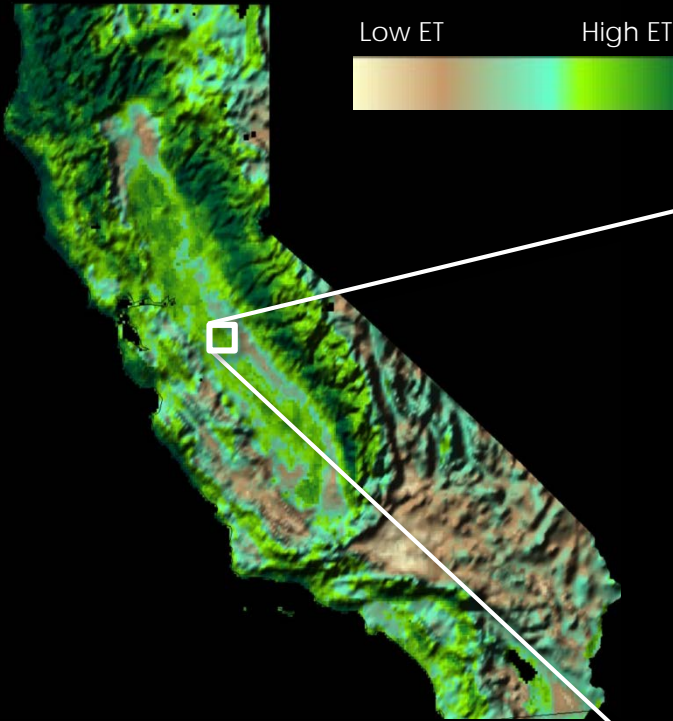
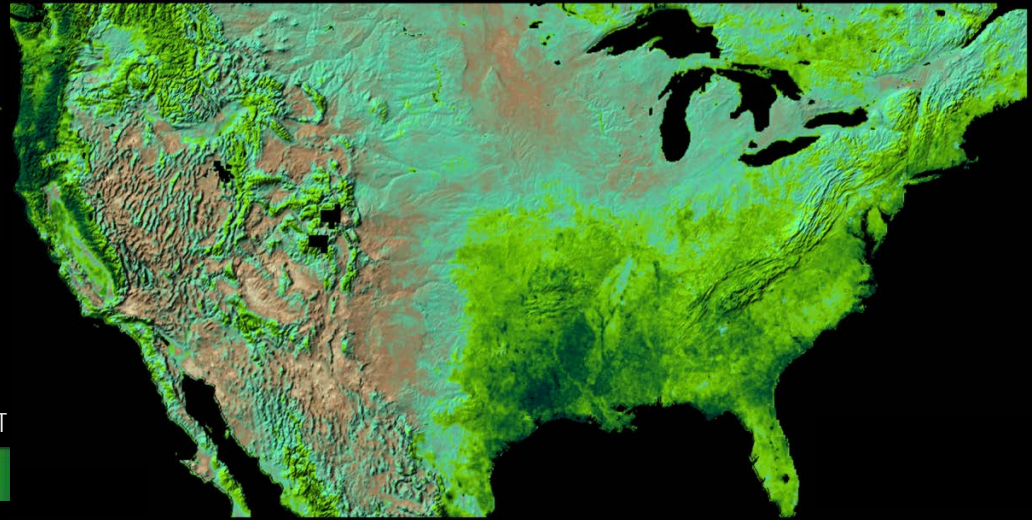


Multi-Sensor Evapotranspiration

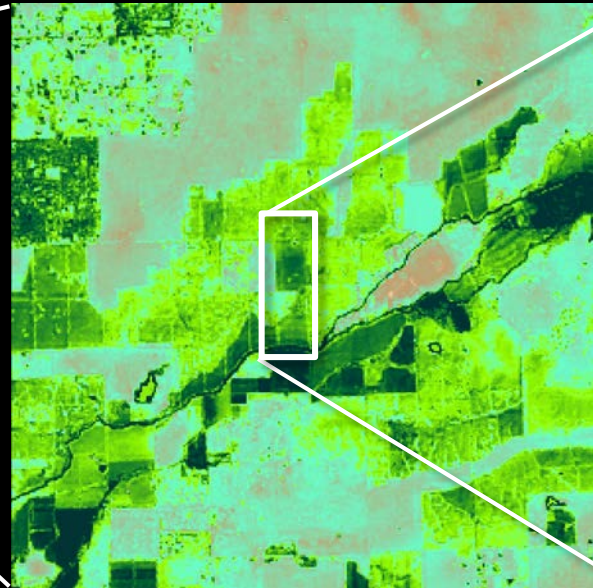
NOAA Geostationary Operational Environmental Satellites

International geostationary constellation

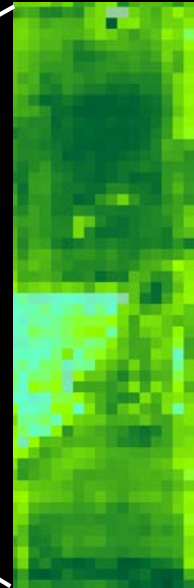
GOES - West



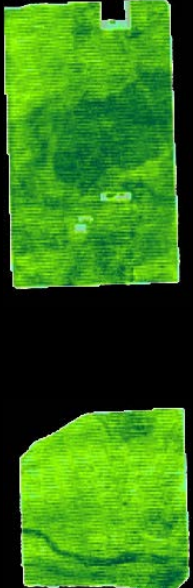
GOES/MODIS/Landsat fusion

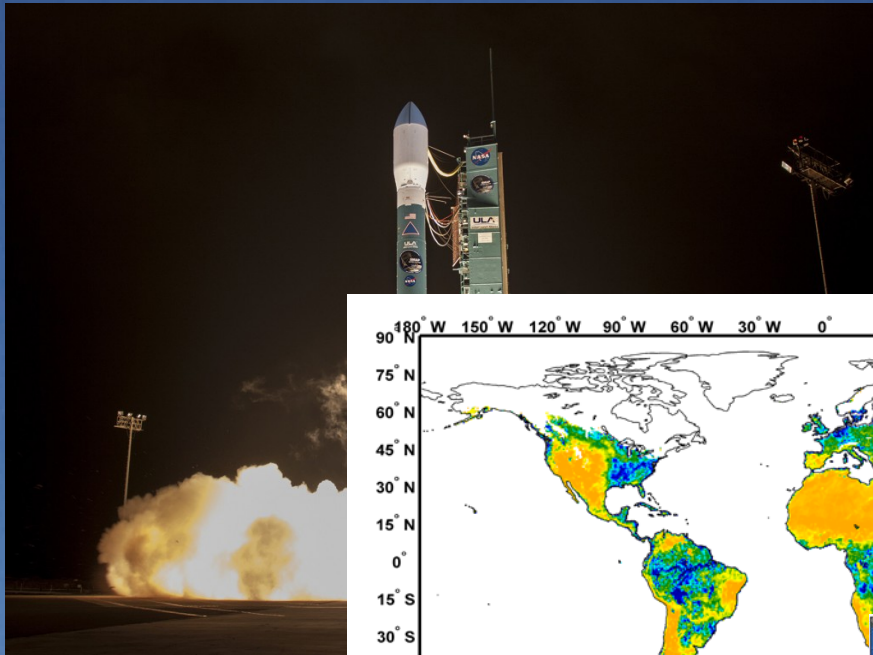


Landsat

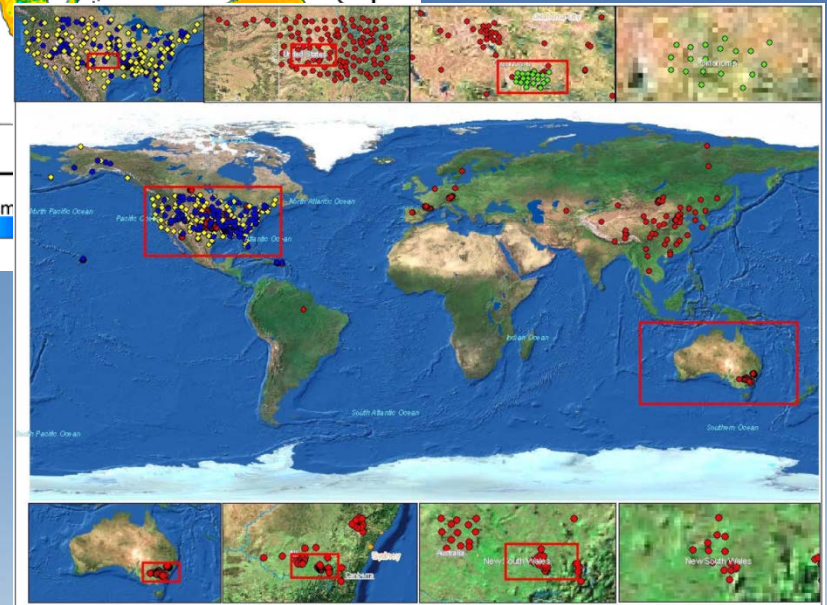
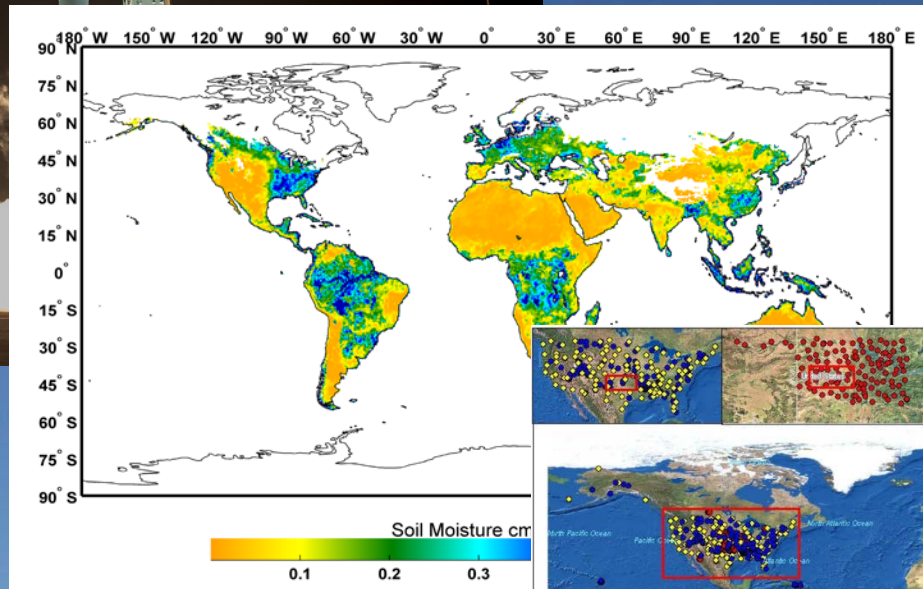


Aircraft



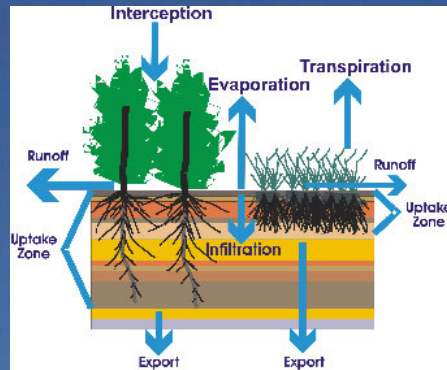


Launch of the NASA Soil Moisture Active/Passive Mission



- Definition of target
- Spatial scaling
- Instrument test-bed
- Field campaign design

Soil Water Balance Model



ESA SMOS

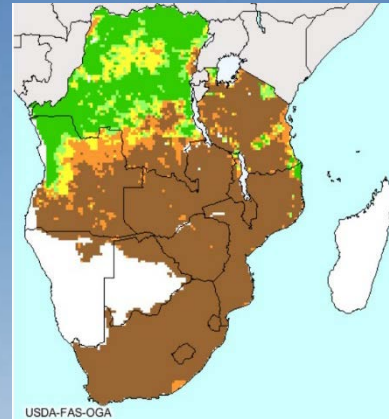


Global Root-Zone Soil Moisture Monitoring For USDA FAS

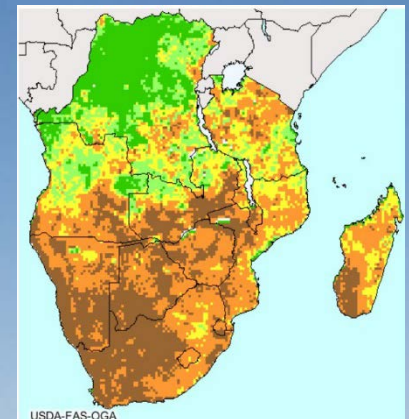
Data Assimilation



Model



Model + SMOS



3-day, global, 0.25° root-zone soil moisture products posted at: <http://www.pecad.fas.usda.gov/cropexplorer/>

Delivery to GEOGLAM Tool